



Government of India
Ministry of Earth Sciences
India Meteorological Department



Press Release

Date: 30th September, 2025

Time of Issue: 1300 hours IST

Subject: (i) Under the influence of well-marked low-pressure area over Gulf of Kutch and neighbourhood, isolated heavy rainfall is likely over coastal areas of Saurashtra & Kutch during 30th September-02nd October.

(ii) Increase in rainfall activity with isolated heavy rainfall likely over east India during 02nd-04th October, 2025.

(iii) Night temperatures are above normal by 3-5°C over many parts of northwest India and likely to be above normal till 04th October.

Realised weather during past 24 hours till 0830 hours IST of today, the 30th September, 2025:

- ❖ **Heavy rainfall (7-11 cm)** has been recorded at isolated places over Nicobar Islands, Coastal Andhra Pradesh and Rajasthan.

For more details of realised weather, kindly refer [Annexure I](#).

Withdrawal of southwest Monsoon:

- ❖ The line of withdrawal of southwest monsoon continues to pass through 20°N/ 69°E, Veraval, Bharuch, Ujjain, Jhansi, Shahjahanpur and 30°N/81°E. ([Annexure II](#))

i. Weather Systems, Forecast and Warnings (refer to [Annexure III & IV](#)):

- ❖ Yesterday's **well-marked low-pressure** area over Saurashtra & adjoining Kutch now lay over Gulf of Kutch & neighbourhood at 0830 hours IST of today, the 30th September 2025. It is likely to move northwestwards across Kutch and neighbourhood during next 12 hrs and emerge into northeast Arabian Sea off north Gujarat coast thereafter. There is a possibility of its intensification into a depression around the time of emergence into the northeast Arabian Sea and west-southwestwards movement thereafter towards northwest Arabian Sea.
- ❖ A **trough** runs from the above **cyclonic circulation** associated with **well-marked low-pressure area over** Gulf of Kutch & neighbourhood to Southeast Uttar Pradesh across central parts of Madhya Pradesh at lower tropospheric levels.
- ❖ A **trough** runs from **cyclonic circulation** associated with **well-marked low-pressure area over** Gulf of Kutch & neighbourhood to northwest Rajasthan at lower tropospheric levels.
- ❖ An upper air **cyclonic circulation** lay over westcentral Bay of Bengal off north Andhra Pradesh coast at lower & middle tropospheric levels tilting southwards with height.
- ❖ An upper air **cyclonic circulation** is likely to emerge into north Andaman Sea today, the 30th September, 2025. Under its influence a low-pressure area is likely to form over central parts of Bay of Bengal around 01st October 2025. It is likely to move west northwestwards and intensify into a Depression over west central and adjoining northwest Bay of Bengal around 2nd October. It is likely to continue to move west-northwestwards and cross south Odisha-North Andhra Pradesh coasts around morning hours of 3rd October.
- ❖ A fresh **Western Disturbance** likely to affect northwest India from 04th October 2025.

Under the influence of these systems, the following weather is likely:

West India:

- ❖ Light to moderate rain/thunderstorm at most/many places with **heavy rainfall** likely over Saurashtra & Kutch during 30th September-02nd October; Konkan & Goa on 03rd & 04th; ghat areas of Madhya Maharashtra & Marathawada on 04th October.

East & Central India:

- ❖ Light to moderate rain/thunderstorm at most/many places with isolated **heavy rainfall** likely over Andaman & Nicobar Islands on 30th September; Sub-Himalayan West Bengal & Sikkim during 02nd-05th; Gangetic West Bengal, Jharkhand during 02nd-04th; Bihar during 02nd-06th; Madhya Pradesh on 04th & 05th October; Chhattisgarh, Odisha during 30th September-03rd October with **isolated very heavy rainfall over Odisha on 02nd; Gangetic West Bengal on 02nd & 03rd; Sub-Himalayan West Bengal & Sikkim on 03rd & 04th October; Bihar during 03rd-05th October.**
- ❖ Thunderstorm & gusty winds (speed reaching 40-50 kmph) very likely over Andaman & Nicobar Islands during next 3 days; (speed reaching 30-40 kmph) very likely over Bihar during next 7 days; West Bengal, Jharkhand, Odisha during next 5 days.

Northeast India:

- ❖ Light/moderate rain/thunderstorm at many/some places with isolated **heavy rainfall** likely over the region during next 4-5 days with **very heavy rainfall** over Assam & Meghalaya on 03rd October.

South Peninsular India:

- ❖ Light to moderate rain/thunderstorm at many/some places with isolated **heavy rainfall** likely over Coastal Andhra Pradesh & Yanam during 30th September-02nd October; Rayalaseema, north Tamil Nadu on 30th September; Telangana during 03rd-05th and Tamil Nadu on 03rd & 04th October.
- ❖ Strong surface winds (speed reaching 30-40 kmph) very likely over Tamil Nadu on 30th September; Coastal Andhra Pradesh & Yanam, Rayalaseema, Telangana during 30th September-04th October.

Northwest India:

- ❖ Light to moderate rain/thunderstorm at many/some places with isolated **heavy rainfall** likely over Rajasthan on 30th September; East Uttar Pradesh on 04th & 05th and Jammu-Kashmir, Himachal Pradesh, Uttarakhand on 06th October.
- ❖ Thunderstorm with lightning very likely at isolated places over Rajasthan, East Uttar Pradesh during 30th September-02nd October and Jammu-Kashmir & Himachal Pradesh during 04th-06th; Uttarakhand on 30th September, 05th & 06th October; West Uttar Pradesh on 30th September & 01st October.

Fishermen warnings:

Fishermen are advised not to venture into the following areas during 30th September to 05th October:

Arabian Sea:

- Gujarat coast during 30th September to 05th October; many parts of northeast & adjoining eastcentral Arabian Sea during 30th September to 02nd October; entire northeast Arabian Sea & adjoining, many parts of northwest Arabian Sea during 02nd to 05th October; along and off Somalia coast and adjoining sea areas during 30th September to 05th October.

Bay of Bengal:

- Tamil Nadu coast on 30th September, Andhra Pradesh coast during 30th September to 05th October, Sri Lanka coast 30th September to 02nd October, Gulf of Mannar & adjoining Comorin area during 30th September to 04th October; and over most parts of South Bay of Bengal during 30th September to 02nd October; Central Bay of Bengal during 30th September to 04th October; north Bay of Bengal during 01st October to 05th October; many parts of westcentral Bay of Bengal on 04th October.
- Along and off Odisha, West Bengal, Bangladesh coasts during 01st to 05th October, Myanmar coast during 01st to 04th October.
- Andaman Sea during 30th September to 03rd October.

ii. Weather conditions and forecast over Delhi/NCR during 30th September to 03rd October, 2025 (Annexure V)

For more details, kindly refer National Weather Bulletin:

https://mausam.imd.gov.in/responsive/all_india_forecast_bulletin.php

For District wise warnings refer: <https://mausam.imd.gov.in/responsive/districtWiseWarningGIS.php>

For Fishermen warning refer <https://rsmcnewdelhi.imd.gov.in/fishermen-warning.php>

Rainfall recorded (in cm) during past 24 hours till 0830 hours IST of today, the 30th September (≥ 7 cm):

Andaman & Nicobar Islands: Iaf Carnicobar (dist Nicobar) 11; Car Nicobar (dist Nicobar) 9;

West Rajasthan: Nawa (dist Nagaur) 10;

East Rajasthan: Nawalgarh (dist Jhunjhunu) 9;

Coastal Andhra Pradesh & Yanam: Seethanagaram (dist Parvathipuram Manyam) 8.

Annexure II

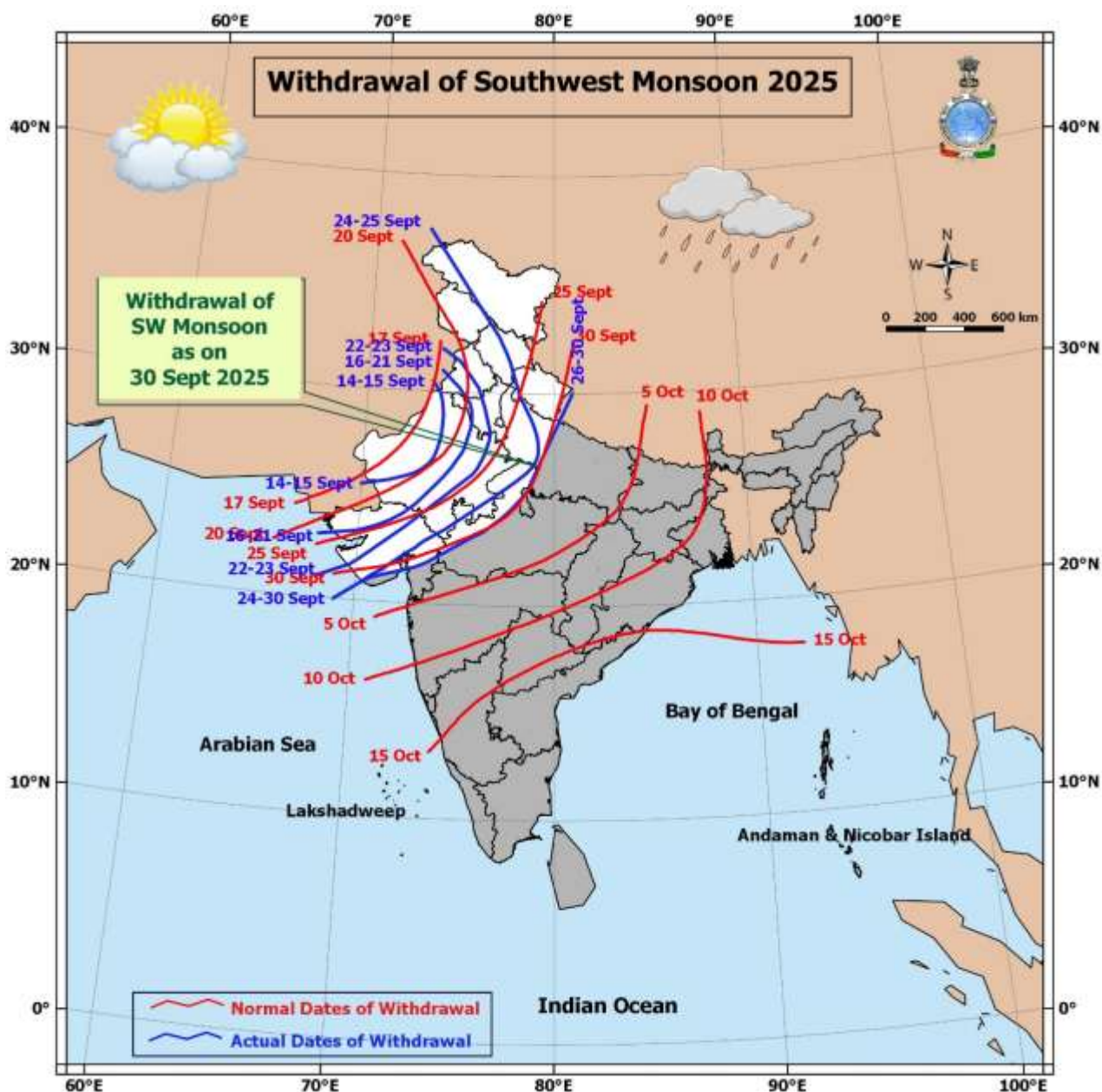
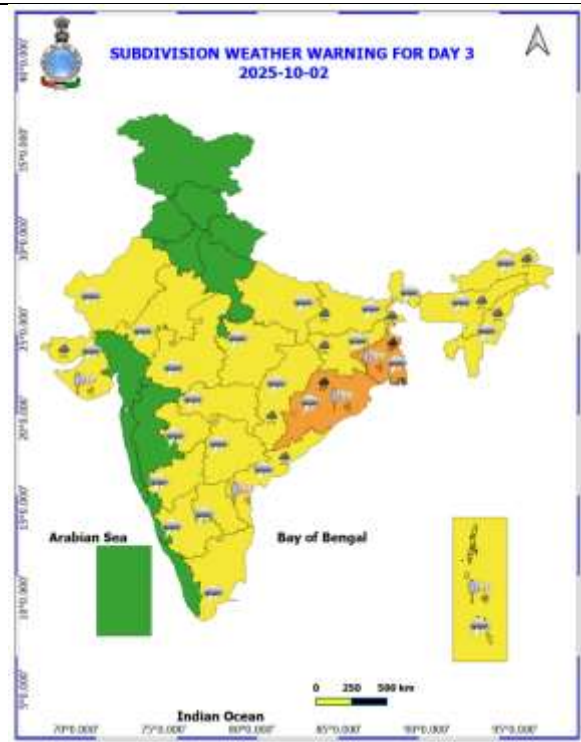
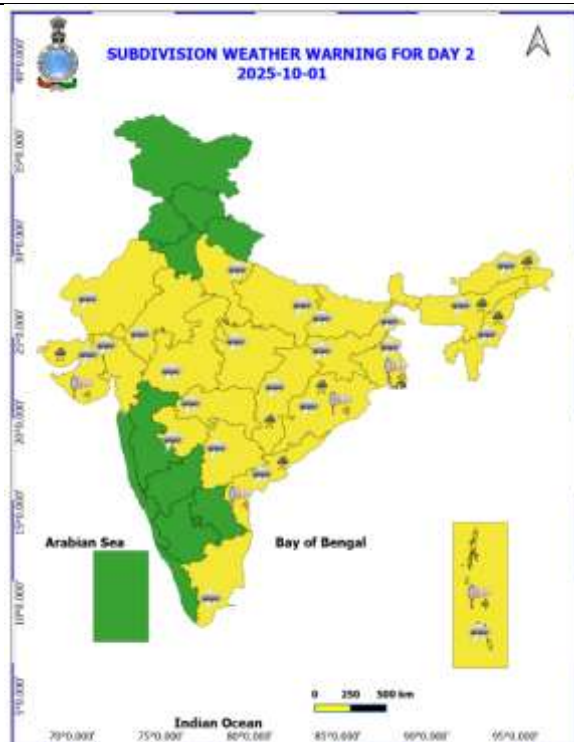
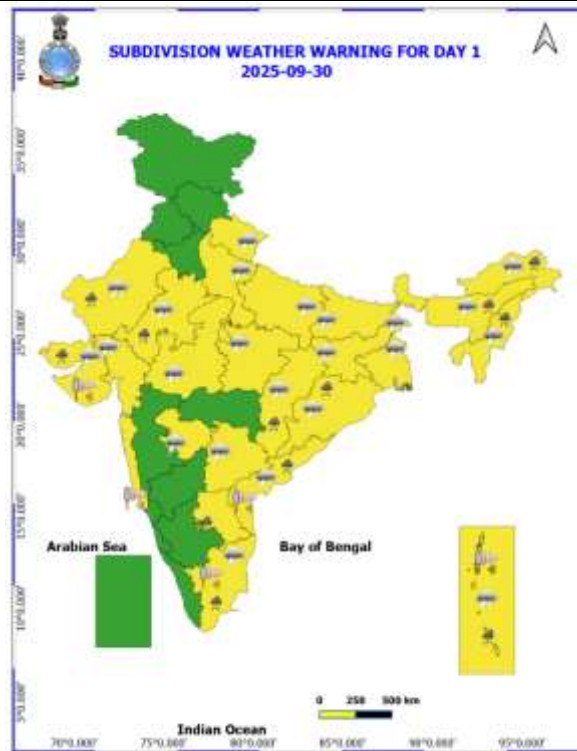
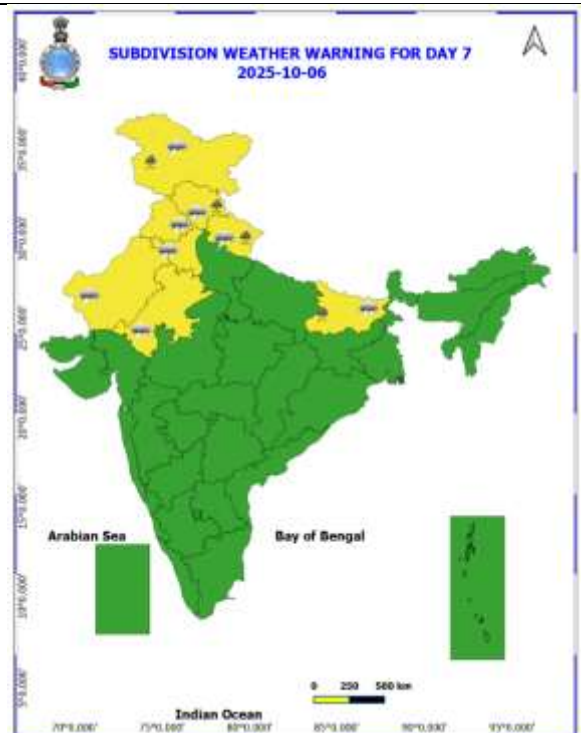
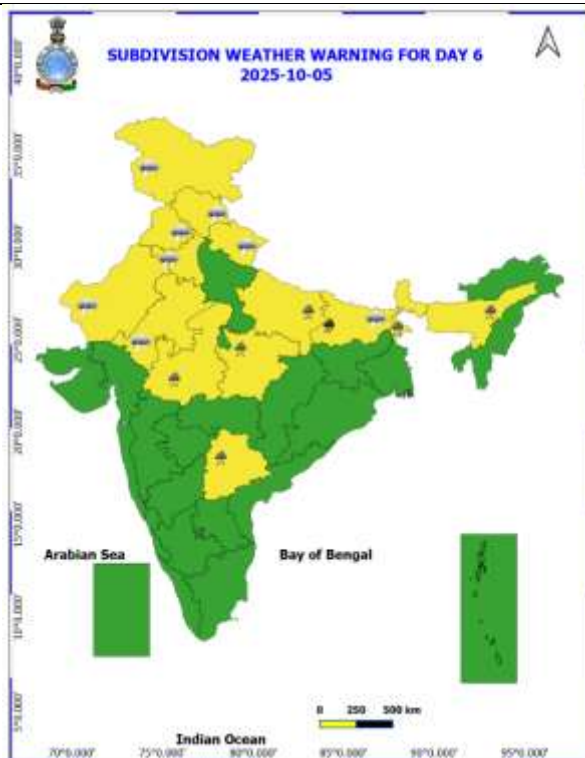
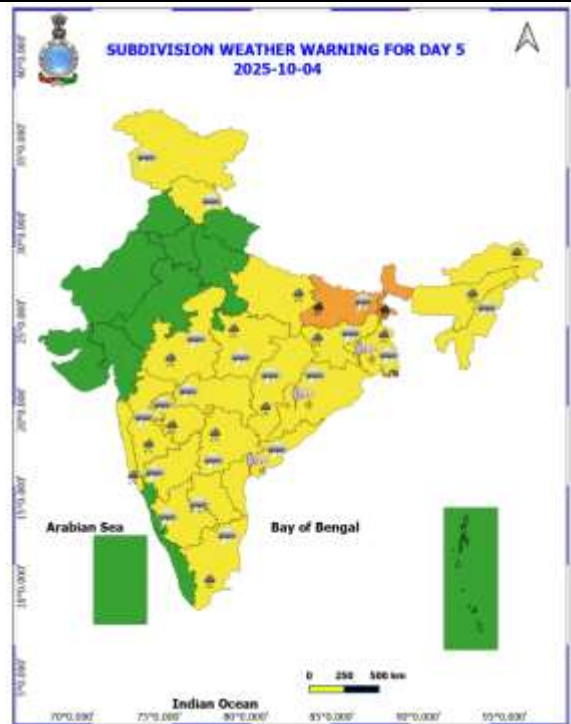
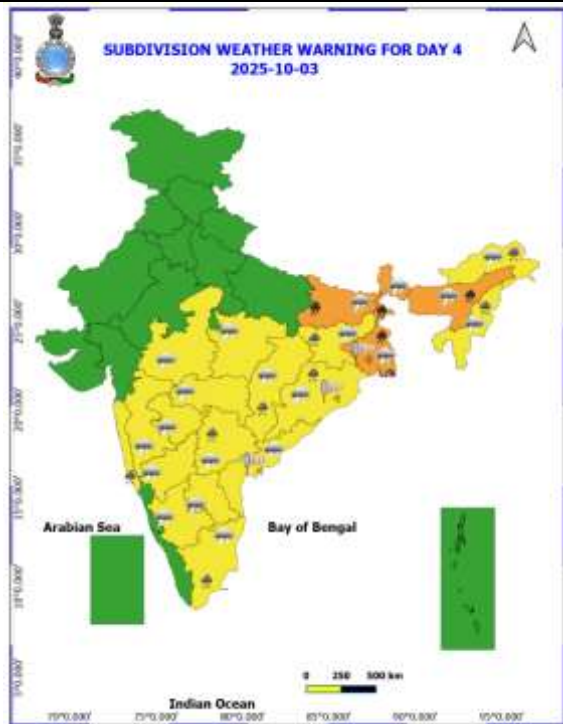


Table-1								
7 Days Rainfall Forecast								
S.No.	Subdivision	30- Sep	1- Oct	2- Oct	3- Oct	4- Oct	5- Oct	6- Oct
		Day 1	Day 2	Day 3	Day 4	Day 5	Day 6	Day 7
1	ANDAMAN & NICOBAR ISLANDS	FWS	FWS	FWS	FWS	SCT	SCT	SCT
2	ARUNACHAL PRADESH	SCT	FWS	FWS	FWS	FWS	SCT	SCT
3	ASSAM & MEHGHALAYA	SCT	FWS	FWS	FWS	FWS	SCT	ISOL
4	NAGALAND, MANIPUR, MIZORAM AND TRIPURA	FWS	FWS	FWS	FWS	SCT	SCT	SCT
5	SUB HIMALAYAN WEST BENGAL & SIKKIM	SCT	FWS	WS	WS	WS	WS	WS
6	GANGETIC WEST BENGAL	SCT	FWS	WS	WS	WS	FWS	FWS
7	ODISHA	SCT	WS	WS	FWS	FWS	FWS	FWS
8	JHARKHAND	SCT	FWS	WS	WS	WS	WS	FWS
9	BIHAR	SCT	SCT	FWS	FWS	WS	WS	FWS
10	EAST UTTAR PRADESH	ISOL	SCT	SCT	SCT	SCT	SCT	ISOL
11	WEST UTTAR PRADESH	SCT	ISOL	ISOL	ISOL	ISOL	ISOL	ISOL
12	UTTARAKHAND	SCT	ISOL	SCT	SCT	SCT	SCT	FWS
13	HARYANA, CHANDIGARH & DELHI	ISOL	ISOL	ISOL	ISOL	ISOL	SCT	SCT
14	PUNJAB	DRY	DRY	DRY	DRY	ISOL	FWS	FWS
15	HIMACHAL PRADESH	DRY	DRY	DRY	DRY	ISOL	SCT	FWS
16	JAMMU AND KASHMIR AND LADAKH	DRY	DRY	DRY	DRY	SCT	FWS	WS
17	WEST RAJASTHAN	ISOL	ISOL	ISOL	ISOL	ISOL	ISOL	SCT
18	EAST RAJASTHAN	ISOL	ISOL	ISOL	ISOL	SCT	SCT	SCT
19	WEST MADHYA PRADESH	ISOL	SCT	SCT	FWS	FWS	FWS	FWS
20	EAST MADHYA PRADESH	SCT	SCT	FWS	FWS	FWS	FWS	FWS
21	GUJRAT REGION	WS	WS	FWS	FWS	FWS	WS	WS
22	SAURASHTRA & KUTCH	WS	WS	WS	SCT	SCT	FWS	FWS
23	KONKAN & GOA	WS	WS	WS	WS	WS	FWS	FWS
24	MADHYA MAHARASHTRA	ISOL	ISOL	SCT	SCT	FWS	SCT	ISOL
25	MARATHWADA	ISOL	ISOL	SCT	FWS	FWS	SCT	ISOL
26	VIDARBHA	SCT	SCT	FWS	WS	WS	WS	FWS
27	CHHATTISGARH	FWS	WS	WS	WS	FWS	FWS	FWS
28	COASTAL ANDHRA PRADESH	SCT	FWS	WS	FWS	SCT	SCT	SCT
29	TELANGANA	SCT	SCT	SCT	SCT	FWS	FWS	FWS
30	RAYALASEEMA	SCT	SCT	SCT	SCT	ISOL	ISOL	ISOL
31	TAMILNADU & PUDUCHERRY	ISOL	ISOL	SCT	SCT	SCT	SCT	ISOL
32	COSTAL KARNATAKA	FWS	WS	WS	WS	WS	FWS	FWS
33	NORTH INTERIOR KARNATAKA	ISOL	SCT	FWS	FWS	WS	FWS	SCT
34	SOUTH INTERIOR KARNATAKA	ISOL	ISOL	SCT	FWS	FWS	FWS	SCT
35	KERALA AND MAHE	FWS	FWS	FWS	FWS	FWS	FWS	FWS
36	LAKSHADWEEP	SCT	SCT	FWS	FWS	FWS	FWS	SCT

- As the lead period increases forecast accuracy decrease.





- Action may be taken based on ORANGE AND REDCOLOUR warnings.
- Vulnerable regions likely urban and hilly areas action may be initiated for heavy rainfall warning.
- As the lead period increases forecast accuracy decreases.

Detailed districtwise Multi Hazard weather warning for next five days available at
<https://mausam.imd.gov.in/responsive/districtWiseWarningGIS.php>

Weather forecast over Delhi/NCR during 30th September to 03rd October 2025**Past Weather:**

There has been rise in the minimum temperature up to 1°C and fall in maximum temperature up to 1°C over Delhi/NCR during the past 24 hours. The maximum and minimum temperatures over Delhi were around 35 to 37°C and 26 to 28°C respectively. The minimum temperature was above normal up to 3 – 5°C and maximum temperature was above normal up to 1 – 2°C. Partly cloudy sky conditions with predominant surface wind from the southeast direction with wind speeds up to 14 kmph prevailed during the past 24 hours. Generally cloudy sky conditions with a wind speed of less than 10 kmph from the southeast direction prevailed over the region in the forenoon today.

Weather Forecast:

30.09.2025: Generally cloudy sky. One or two spells of very light to light rain at many places with moderate rain at a few places accompanied with thunderstorm/lightning and wind speed reaching 30 -40 kmph Gusting to 50 kmph. The maximum and minimum temperatures over Delhi are likely to be in the range of 34 to 36°C. The maximum temperature will be above normal up to 1 – 2°C. The predominant surface wind will likely to be from the southeast direction with a wind speed of up to 10-15 kmph during afternoon hours. The wind speed will decrease becoming less than 12 kmph from the southwest direction during the evening and night.

01.10.2025: Generally cloudy sky. A spell of very light to light rain/drizzle in the morning. The maximum and minimum temperatures over Delhi are likely to be in the range of 33 to 35°C and 25 to 27°C respectively. The minimum temperature will be above normal up to 2 – 4°C and the maximum temperature will be near normal. The predominant surface wind will likely to be from the southwest direction with a wind speed of up to 08-12 kmph during morning hours. The wind speed will gradually increase becoming less than 15 kmph from the southeast direction in the afternoon. The wind speed will decrease becoming less than 12 kmph from the southeast direction during the evening and night.

02.10.2025: Generally cloudy sky. One or two spells of very light to light rain/drizzle. The maximum and minimum temperatures over Delhi are likely to be in the range of 33 to 35°C and 24 to 26°C respectively. The minimum temperature will be above normal up to 1 – 2°C and the maximum temperature will be near normal. The predominant surface wind will likely to be from the southeast direction with a wind speed of up to 05-10 kmph during morning hours. The wind speed will gradually increase becoming less than 15 kmph from the southeast direction in the afternoon. The wind speed will decrease becoming less than 12 kmph from the southeast direction during the evening and night.

03.10.2025: Partly cloudy sky. The maximum and minimum temperatures over Delhi are likely to be in the range of 34 to 36°C and 24 to 26°C respectively. The minimum temperature will be above normal up to 1 – 2°C and the maximum temperature will be above normal up to 1 – 2°C. The predominant surface wind will likely to be from the southeast direction with a wind speed of up to 05 - 10 kmph during morning hours. The wind speed will gradually increase becoming less than 15 kmph from the east direction in the afternoon. The wind speed will decrease becoming less than 10 kmph from the southeast direction during the evening and night.

Impact & Action Suggested due to

- ❖ **Very heavy rainfall (12-20 cm)** at isolated places over Odisha on 02nd; Gangetic West Bengal on 02nd & 03rd; Sub-Himalayan West Bengal & Sikkim on 03rd & 04th; Bihar during 03rd-05th and Assam & Meghalaya on 03rd October.

Impact Expected

- Water logging/ flooding in many parts of low lying area and river banks
- Localized and short term disruption to municipal services (water, electricity, etc.)
- Major disruption of traffic flow. Major roads/local trains affected.
- Possibility of danger to very old buildings and unmaintained structures, falling of trees etc
- Closure of roads crossing low water bridges.

Action Suggested

- Traffic may be regulated effectively
- People in the affected area may restrict their movement.

Agromet advisories for likely impact of Heavy / Heavy to Very Heavy / Extremely Heavy Rainfall

- In **Sub-Himalayan West Bengal**, undertake harvesting of matured cardamom crop and shift the produce to properly covered shelter to avoid losses. Make necessary arrangements to drain out excess water from the fields of Rice, finger millet, green gram, ginger and vegetables. In **Gangetic West Bengal**, make necessary arrangements to drain out excess water from the fields of rice, betel vine gardens and vegetables.
- In **Odisha**, make provision to drain out excess water from fields of rice, finger millet, maize, pulses, groundnut, cotton, sesame, vegetables and fruit orchards. Make arrangement for covering vegetables nurseries like chilli, okra and brinjal with plastic cover or polythene sheet.
- In **Bihar**, make necessary arrangements to drain out excess water from the fields of rice, maize and vegetables.
- In **Arunachal Pradesh**, keep the harvested produce of rice, maize, vegetables, finger millet and matured bunches of banana to properly covered shelter to avoid losses.
- In **Saurashtra & Kutch**, make necessary arrangements to drain out excess water from fields of cotton, pigeon pea, groundnut, black gram, green gram, castor, pearl millet, soybean, sesame and vegetables. Keep the harvested produce of crops such as groundnut, sesame, maize, pearl millet, soybean etc. at safer places.

Livestock / Fishery

- Keep the animals inside the shed during heavy rainfall and provide them balanced feed.
- Store feed and fodder in a safe place to prevent spoilage.
- Construct an outlet with proper netting around the ponds to drain out excess water, thereby preventing fish from escaping in case of overflow.

Agromet advisories for likely impact of Thunderstorm / Gusty Winds / Squally Winds

- Provide mechanical support to horticultural crops and staking or support to vegetables and young fruit plants / fruit-bearing plants to avoid lodging due to strong winds.

Legends & abbreviations:

- ❖ **Heavy Rain:** 64.5-115.5mm; **Very Heavy Rain:** 115.6-204.4mm; **Extremely Heavy Rain:** >204.4mm.
- ❖ **Obsy:** Observatory; **Automatic Weather Station;** **ARG:** Automatic Rain Gauge; **dist:** District; **NH:** National Highway; **KVK:** Krishi Vigyan Kendra; **DVC:** Damodar Valley Corporation; **PTO:** Part Time Office, **Aero:** Aerodrome, **IAF:** Indian Air Force.
- ❖ **Region wise classification of meteorological Sub-Divisions:**
 - **Northwest India:** Western Himalayan Region (Jammu-Kashmir-Ladakh-Gilgit-Baltistan-Muzaffarabad, Himachal Pradesh and Uttarakhand); Punjab, Haryana-Chandigarh-Delhi; West Uttar Pradesh, East Uttar Pradesh, West Rajasthan and East Rajasthan.
 - **Central India:** West Madhya Pradesh, East Madhya Pradesh, Vidarbha and Chhattisgarh.
 - **East India:** Bihar, Jharkhand, Sub-Himalayan West Bengal & Sikkim; Gangetic West Bengal, Odisha and Andaman & Nicobar Islands.
 - **Northeast India:** Arunachal Pradesh, Assam & Meghalaya and Nagaland, Manipur, Mizoram & Tripura.
 - **West India:** Gujarat Region, Saurashtra & Kutch, Konkan & Goa, Madhya Maharashtra and Marathawada.
 - **South India:** Coastal Andhra Pradesh & Yanam, Telangana, Rayalaseema, Coastal Karnataka, North Interior Karnataka, South Interior Karnataka, Kerala & Mahe, Tamil Nadu, Puducherry & Karaikal and Lakshadweep.

LEGENDS

1. अंडमान और निकोबार द्वीपसमूह

2. अरुणाचल प्रदेश

3. असम और मेघालय

4. नागालैंड, मणिपुर, मिजोरम और त्रिपुरा

5. उप-हिमालयी पश्चिम बंगाल और सिक्किम

6. गंगीय पश्चिम बंगाल

7. ओडिशा

8. झारखंड

9. बिहार

10. पूर्वी उत्तर प्रदेश

11. पश्चिम उत्तर प्रदेश

12. उत्तराखंड

13. हरियाणा, चंडीगढ़ और दिल्ली

14. पंजाब

15. हिमाचल प्रदेश

16. जम्मू और कश्मीर और लद्दाख

17. पश्चिम राजस्थान

18. पूर्वी राजस्थान

19. पश्चिम मध्य प्रदेश

20. पूर्वी मध्य प्रदेश

21. गुजरात

22. सौराष्ट्र

23. कोंकण और गोवा

24. मध्य महाराष्ट्र

25. मराठवाड़ा

26. विदर्भ

27. छत्तीसगढ़

28. तटीय आंध्र प्रदेश और यनम

29. तेलंगाना

30. रायलसीमा

31. तमिलनाडु, पुडुचेरी और कराईकल

32. तटीय कर्नाटक

33. आंतरिक उत्तरी कर्नाटक

34. आंतरिक दक्षिणी कर्नाटक

35. केरल और माहे

36. लक्षद्वीप



1. Andaman & Nicobar Islands

2. Arunachal Pradesh

3. Assam & Meghalaya

4. Nagaland, Manipur, Mizoram & Tripura

5. Sub-Himalayan West Bengal & Sikkim

6. Gangetic West Bengal

7. Odisha

8. Jharkhand

9. Bihar

10. East Uttar Pradesh

11. West Uttar Pradesh

12. Uttarakhand

13. Haryana, Chandigarh & Delhi

14. Punjab

15. Himachal Pradesh

16. Jammu & Kashmir and Ladakh

17. West Rajasthan

18. East Rajasthan

19. West Madhya Pradesh

20. East Madhya Pradesh

21. Gujarat

22. Saurashtra

23. Konkan & Goa

24. Madhya Maharashtra

25. Marathwada

26. Vidarbha

27. Chhattisgarh

28. Coastal Andhra Pradesh & Yanam

29. Telangana

30. Rayalaseema

31. Tamilnadu, Puducherry & Karaikal

32. Coastal Karnataka

33. North Interior Karnataka

34. South Interior Karnataka

35. Kerala & Mahe

36. Lakshadweep

SPATIAL DISTRIBUTION (% of Stations reporting)

% Stations	Category	% Stations	Category
76-100	Widespread (WS/Most Places)	26-50	Scattered (SCT/A Few Places)
51-75	Fairly Widespread (FWS/Many Places)	1-25	Isolated (ISOL)



Fog



Heavy Snow



Cold Wave



Heavy Rain



Dust Storm



Cold Day



Very Heavy Rain



Heat Wave



Ground Frost



Extremely Heavy Rain



Warm Night



Thunder & Lightning



Hot Day



Hailstorm



Hot & Humid



Dust Raising Winds



Strong Surface Winds

COLOUR CODED WARNING

No Warning (No Action)

Watch (Be Aware)

Alert (Be Prepared To Take Action)

Warning (Take Action)

Probabilistic Forecast

Terms	Probability of Occurrence (%)
Unlikely	< 25
Likely	25 - 50
Very Likely	50 - 75
Most Likely	> 75

* Red colour warning does not mean "Red Alert", Red colour warning means "Take Action".

Forecast and Warning for any day is valid from 0830 hours IST of day till 0830 hours IST of next day.

For more details, kindly visit <https://mausam.imd.gov.in> or contact: 011-2434-4599

(Service to the Nation since 1875)

DEFINITION/CRITERIA

Rain/ Snow *

Heavy: 64.5 to 115.5 mm/cm *
Very Heavy: 115.6 to 204.4 mm/cm *
Extremely Heavy: > 204.4 mm/cm *

Heat Wave

When maximum temperature of a station reaches $\geq 40^\circ\text{C}$ for plains and $\geq 30^\circ\text{C}$ for hilly regions
(a) Based on Departure from normal

Heat Wave: Maximum Temperature Departure from normal 4.5°C to 6.4°C .

Severe Heat Wave: Maximum Temperature Departure from normal $\geq 6.5^\circ\text{C}$

(b). Based on Actual maximum temperature

Heat Wave: When actual maximum temperature $\geq 45^\circ\text{C}$.

Severe Heat Wave: When actual maximum temperature $\geq 47^\circ\text{C}$.

(c). Criteria for heat wave for coastal stations

When maximum temperature departure is $> 4.5^\circ\text{C}$ from normal. Heat Wave may be described provided maximum temperature $\geq 37^\circ\text{C}$.

Warm Night

When maximum temperature remains 40°C

Warm Night: When minimum temperature departure 4.5°C to 6.4°C .

Severe Warm Night: When minimum temperature departure $> 6.4^\circ\text{C}$.

Cold Wave

When minimum temperature of a station $\leq 10^\circ\text{C}$ for plains and $\leq 0^\circ\text{C}$ for hilly regions.

(a). Based on departure

Cold Wave: Minimum Temperature Departure from normal -4.5°C to -6.4°C .

Severe Cold Wave: Minimum Temperature Departure from normal $\leq -6.5^\circ\text{C}$

(b) Based on actual Minimum Temperature (for Plains only)

Cold Wave: When Minimum Temperature is $\leq 4.0^\circ\text{C}$

Severe Cold Wave: When Minimum Temperature is $\leq 2.0^\circ\text{C}$

(c) For Coastal Stations

When Minimum Temperature departure is $\leq -4.5^\circ\text{C}$ & actual Minimum Temperature is $\leq 15^\circ\text{C}$

Cold Day

When minimum temperature of a station $\leq 10^\circ\text{C}$ for plains and $\leq 0^\circ\text{C}$ for hilly regions

Based on departure

Cold Day: Maximum Temperature Departure from normal -4.5°C to -6.4°C .

Severe Cold Day: Maximum Temperature Departure from normal $\leq -6.5^\circ\text{C}$

Fog

Phenomenon of small droplets suspended in air and the horizontal visibility $< 1\text{km}$

Moderate Fog: When the visibility between 500-200 metres

Dense Fog: when the visibility between 50- 200 metres

Very Dense Fog: when the visibility < 50 metres

Thunderstorm

Sudden electrical discharges manifested by a flash of light (Lightning) and a sharp rumbling sound (thunder)

Dust/Sand Storm

An ensemble of particles of dust or sand energetically lifted to great heights by a strong and turbulent wind.

Frost

Ice deposits on ground

Air temperature $\leq 4^\circ\text{C}$ (over Plains)

Squall

A strong wind that rises suddenly, lasts for atleast 1 minute.

Moderate: Wind speed 52-61 kmph

Severe: Wind speed 62-67 kmph

Very Severe: Wind speed > 67 kmph

Sea State

Effect of various waves in the sea over specific area

Rough to very rough: Wind speed 41-62 kmph (22-33 knots) & Wave height 2.5-6 metre

High to very high: Wind speed 63-117 kmph (34-63 knots) & Wave height 6-14 metre

Phenomenal: Wind speed > 117 kmph (> 63 knots) & Wave height > 14 metre

Cyclone

Cyclonic Storm: Wind speed 62-87 kmph (34-47 knots)

Severe Cyclonic Storm: Wind speed 88-117 kmph (48-63 knots)

Very Severe Cyclonic Storm: Wind speed 118-165 kmph (64 - 89 knots)

Extremely Severe Cyclonic Storm: Wind speed 166-220 kmph (90 -119 knots)

Super Cyclone Storm: Wind speed > 220 kmph (> 119 knots)

* Red colour warning does not mean "Red Alert", Red colour warning means "Take Action".

Forecast and Warning for any day is valid from 0830 hours IST of day till 0830 hours IST of next day.

For more details, kindly visit <https://mausam.imd.gov.in> or contact: 011-2434-4599

(Service to the Nation since 1875)